

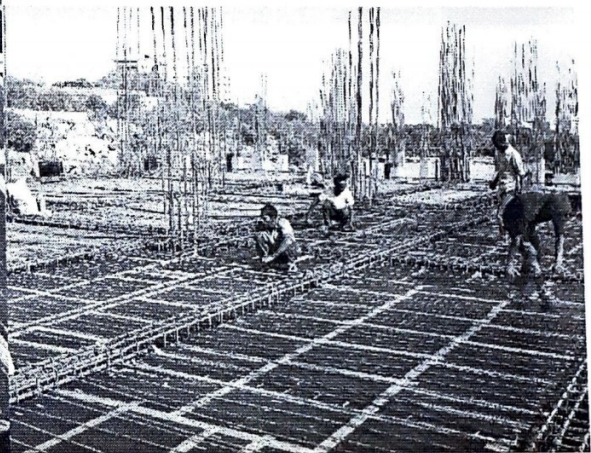
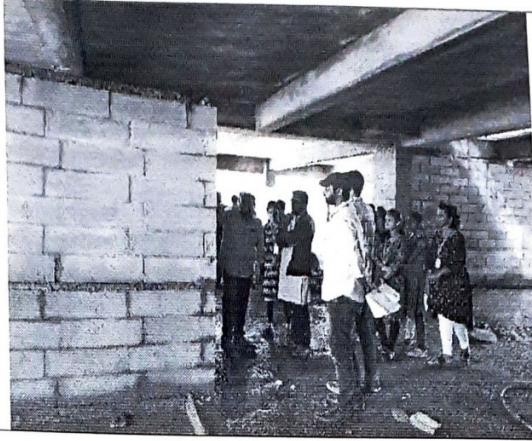


GokarajuRangaraju Institute of Engineering and Technology EVENT
SUMMARY REPORT

EVENT Conducted under ICI Students Chapter

Nature of the Event (Workshop/Guest lecture/ Membership drive/ Seminar/Training program/Industrial visit/Talk /FDP/GD/Quiz/Presentation Lecture/Seminar/Membership)	Industrial Visit - B.Tech I st Civil Engineering
Title/ThemeoftheEvent	Plastering of slab,brick work , marking of slab reinforcement for Ganges valley school (3 rd floor)
Nominee Faculty Members	Dr.S.Rajeswari Associate Professor
Date(s) on which event is held	12 th February 2020
Details of the Speaker /Guest Name Organization	Shiva reddy(Site engineer), Ramakrishna raju(supervisor)
Target Audience (Teaching Faculty/ Non-Teaching Faculty/ Students)	Student-80 Faculty-1
Summary of the event	We observed the hacking of the slab. Application of slurry and two coats of plastering (1 st coat—1:6 & 2 nd coat—1:3). For brick work MASONARY GLUE 110 is used for jointing of the bricks and preparation of glue is observed. We observed verticality of the wall with plumb bob. We read the preparing and applications of the glue which are given on the masonry glue 110 bag. Reinforcement marking of slab in 3 rd floor is studied and observed from the drawings. his visit was successfully completed under the guidance and support of HOD Sir, Nominee Faculty.
POs attained with this Event	PO3, PO5,PO8, PO9,PO10,PO11, PO12

Photographs of the event



Slabs

Slab is an important structural element which is constructed to create flat and useful surfaces such as floors, roofs, and ceilings. It is a horizontal structural component, with top and bottom surfaces parallel or near so. To read more about slab thickness evaluation. Commonly, slabs are supported by beams, columns (concrete or steel), walls, or the ground. The depth of a concrete slab floor is very small compared to its span.

Types of Loads on a Slab

1. Dead load of the slab
2. Live load
3. Floor finish load

„ Snow load in the case of roof slab

5. Earthquake loads

Load Transfer Mechanism in Slabs

The forces transfer from slab to beams occur either in one way or in two ways. The total system completely counts on the geometrical dimensions of the slab.

Slabs may be supported by columns only, in this case two way action will prevail. If the ratio Long side / short side < 2 it is considered as 2-way slab, and if Longer side to shorter side greater than 2 then it is considered as 1-way slab.

The load transfer mechanism from floor slab to supporting elements for one way slab and two way slab are illustrate the transfer of loads from slabs to different types of supporting elements.

Beams

Beam is a horizontal structural element that withstand vertical loads, shear forces and bending moments. The loads applied to the beam result in reaction forces at the support points of the beam.

The total effect of all the forces acting on the beam is to produce shear forces and bending moment within the beam, that in turn induce internal stresses, strains and deflections of the beam.

Types of Loads on Beams

1. Self-weight of the beam
2. Dead load includes point load for instance column constructed on beam, distributed load for example setting slabs on a beam.
3. Live load
4. Torsional load

Load Transfer Mechanism in Beams

They transfer loads imposed along their length to their end points where the loads are transferred to columns or any other supporting structural elements.

Concrete, usually **Portland cement concrete**, is a composite material composed of fine and coarse aggregate bonded together with a fluid cement (cement paste) that hardens over time— most frequently a lime-based cement binder, such as Portland cement, but sometimes with other hydraulic cements, such as a calcium aluminate cement. It is distinguished from other, non- cementitious types of concrete all binding some form of aggregate together, including asphalt

use polymers as a binder. They are used for road surfaces, and polymer concretes that When aggregate is mixed with dry Portland cement and water, the mixture forms a fluid slurry that is easily poured and molded into shape. The cement reacts with the water and other ingredients to form a hard matrix that binds the materials together into a durable stone-like material that has many uses. Often, additives (such as pozzolans or superplasticizers) are included in the mixture to improve the physical properties of the wet mix or the finished material. Most concrete is poured with reinforcing materials (such as rebar) embedded to provide tensile strength, yielding reinforced concrete.

Concrete is one of the most frequently used building materials. Its usage worldwide, ton for ton, is twice that of steel, wood, plastics, and aluminum combined. Globally, the ready-mix concrete industry, the largest segment of the concrete market, is projected to exceed \$600 billion in revenue by 2025.

The word concrete comes from the Latin word "*concretus*" (meaning compact or condensed), the perfect passive participle of "*concrecere*", from "*con-*" (together) and "*crescere*" (to grow).

Ancient times

Small-scale production of concrete-like materials was pioneered by the Nabatean traders who occupied and controlled a series of oases and developed a small empire in the regions of southern Syria and northern Jordan from the 4th century BC. They discovered the advantages of hydraulic lime, with some self-cementing properties, by 700 BC. They built kilns to supply mortar for the

Industrial

Perhaps the greatest step forward in the modern use of concrete was Smeaton's Tower, built by British engineer John Smeaton in Devon, England, between 1756 and 1759. This third Eddystone Lighthouse pioneered the use of hydraulic lime in concrete, using pebbles and powdered brick as aggregate.

A method for producing Portland cement was developed in England and patented by Joseph Aspdin in 1824. Aspdin chose the name for its similarity to Portland stone, which was quarried on the Isle of Portland in Dorset, England. His son William continued developments into the 1840s, earning him recognition for the development of "modern" Portland cement.

Reinforced concrete was invented in 1849 by Joseph Monier, and the first house was built by François Coignet in 1853. The first concrete reinforced bridge was designed and built by Joseph Monier in 1875. Famous concrete structures include the Hoover Dam, the Panama Canal and the Roman Pantheon. The earliest large-scale users of concrete technology were the ancient Romans, and concrete was widely used in the Roman Empire. The Colosseum in Rome was built largely of concrete, and the concrete dome of the Pantheon is the world's largest unreinforced concrete dome. Today, large concrete structures (for example dams and multi-story car parks) are usually made with reinforced concrete.

Cement

Portland cement is the most common type of cement in general usage. It is a basic ingredient of concrete, mortar and many plasters. British masonry worker Joseph Aspdin patented Portland cement in 1824. It was named because of the similarity of its color to Portland limestone, quarried from the English Isle of Portland and used extensively in London architecture. It consists of a mixture of calcium silicates (alite, belite), aluminates and ferrites – compounds which combine calcium, silicon, aluminum and iron in forms which will react with water. Portland cement and similar materials are made by heating limestone (a source of calcium) with clay or shale (a source of silicon, aluminum and iron) and grinding this product (called

with a source of sulfate (most commonly gypsum).

Combining water with a cementitious material forms a cement paste by the process of hydration. The cement paste glues the aggregate together, fills voids within it, and makes it flow more freely.

As stated by Abrams' law, a lower water-to-cement ratio yields a stronger, more durable concrete, whereas more water gives a freer-flowing concrete with a higher slump. Impure water used to make concrete can cause problems when setting or in causing premature failure of the structure.

Aggregates

Fine and coarse aggregates make up the bulk of a concrete mixture. Sand, natural gravel, and crushed stone are used mainly for this purpose. Recycled aggregates (from construction, demolition, and excavation waste) are increasingly used as partial replacements for natural aggregates, while a number of manufactured aggregates, including air-cooled blast furnace slag and bottom ash are also permitted.

The size distribution of the aggregate determines how much binder is required. Aggregate with a very even size distribution has the biggest gaps whereas adding aggregate with smaller particles tends to fill these gaps. The binder must fill the gaps between the aggregate as well as paste the surfaces of the aggregate together, and is typically the most expensive component. Thus, variation in sizes of the aggregate reduces the cost of concrete. The aggregate is nearly always stronger than the binder, so its use does not negatively affect the strength of the concrete.

Admixtures

Admixtures are materials in the form of powder or fluids that are added to the concrete to give it certain characteristics not obtainable with plain concrete mixes. Admixtures are defined as additions "made as the concrete mix is being prepared". The most common admixtures are retarders and accelerators. In normal use, admixture dosages are less than 5% by mass of cement and are added to the concrete at the time of batching/mixing.

S. No	Roll No	Name Of The Student
1	19241A0101	RUHAIL AHMAD LONE
2	19241A0102	AITHA SAI TEJA
3	19241A0103	BARISETTY SHIVA KARTHIK
4	19241A0104	BENDHI VARUN THEJA GOUD
5	19241A0105	BHUKYA VAMSHI
6	19241A0106	BOGE VENKAT ROHITH
7	19241A0107	BONTHA PRANEETHKUMAR
8	19241A0108	CHILUKA RAHUL
9	19241A0109	DANDI KIRAN

	19241A0110	DAYYA RAGNESH
	19241A0111	EDULA MANISH GOUD
	19241A0112	ERRAM SAI PRIYA
12	19241A0113	G DEEPIKA
13	19241A0114	GORANTALA SAI
14	19241A0115	GUGULOTHU SANTHOSH
15	19241A0116	GURIJALA SAI KUMAR
16	19241A0117	GURUJALA SRIDHAR
17	19241A0118	IRUVANTI HEMANTH KUMAR
18	19241A0119	JANGITI VYSHNAVI
19	19241A0120	JARUPLA CHERAN
20	19241A0121	JATOTHU NAVEEN
21	19241A0122	JETTI SREEVANI
22	19241A0123	K SOWMYA
23	19241A0124	KADALI KRISHNA SRI SAI
24	19241A0125	KAMAREDDY AKSHAY
25	19241A0126	KATTA SAI KUMAR
26	19241A0127	KOLLURI TEJASWI
27	19241A0128	KONDAPURAM SRIJA
28	19241A0129	KOTTE VIVEK
29	19241A0130	KRUTHIKA VIJAY PALANGE
30	19241A0131	MADA AKHIL REDDY
31	19241A0132	MADARAM SHRAVAN KUMAR REDDY
32	19241A0133	MADDIGATLA AJAY SAGAR
33	19241A0134	MALPATEL CHANDANA
34	19241A0135	MANDALA CHINNI
35	19241A0136	MIREGILLA VIJAYA KUMAR
36	19241A0137	MOHD OBAID KASHIF
37	19241A0138	NARAPAKA MADHAV KUMAR
38	19241A0139	NIMMALA ARSHITHA
39	19241A0140	P MAHAVEER
40	19241A0141	P SIDDARTHA
41	19241A0142	PAGIDIPALLY AJAYKUMAR
42	19241A0143	PALLAPU NAVEEN
43	19241A0144	PALLE SANATH KUMAR
44	19241A0145	PANTANGI PRANAY
45	19241A0146	PATIL SWAPNIL
46	19241A0147	POLISETTY SAAHAS
47	19241A0148	S SAI TEJA
48	19241A0149	SAI NEERAJ M
49	19241A0150	SATYA SAI PRASANNA
50	19241A0151	SHAIK BILAL
51	19241A0152	SHAIK FIRDOUS AYESHA
52	19241A0153	SOORA VIKAS
53	19241A0154	TELLAM SRI SAI PAVANA ROSHINI
54	19241A0155	THALLAPALLY SWARANYA
55	19241A0156	THUMATI VENKATA YAYUNANDHAN
56		

	19241A0157	UDUMULA NIKHIL REDDY
	19241A0158	VELISHALA GAYATHRI
	19241A0159	VENKATA SIDDHARTHA RAJU VEGESNA
	19241A0160	YASWANTH KURUVA
61	19241A0161	ABDUL RAHEEM
62	19241A0162	ANEMONI MURALI MANOHAR
63	19241A0163	ASKANY HARISH SAGAR
64	19241A0164	BODLA AKSHITH
65	19241A0165	BURRA VAMSHI KRISHNA
66	19241A0166	CHERLAKOLA AKHILA
67	19241A0167	CHINTA PALLI VIKRAM
68	19241A0168	CHIRRIBOYINA DHANYA
69	19241A0169	D SREE MADHURI
70	19241A0170	GADDAM SAHITHI
71	19241A0171	GAJJALA SUKENDHAR REDDY
72	19241A0172	GANGAVARAM YASHASWI
73	19241A0173	GINDHAM ADITYA KUMAR
74	19241A0174	GUDHETI NARENDAR REDDY
75	19241A0175	GUMMADI SAI PRATEEK REDDY
76	19241A0176	HANMAPUR DHEERAJ GOUD
77	19241A0177	JAVVAJI AISHWARYA
78	19241A0178	JULAPALLY NITHIN RAO
79	19241A0179	K NAVEEN
80	19241A0180	K RAJESHWARI


Signature of coordinator


Signature Of HOD(BS&H)



GOKARAJU RANGARAJU

INSTITUTE OF ENGINEERING AND TECHNOLOGY

COMPUTER SOCIETY OF INDIA




Nature of the Event (Workshop/Guest lecture/ Membership drive/ Seminar/Training program/Industrial visit/Talk /FDP/GD/Quiz/Presentation Lecture/Seminar/Membership)	Industrial Visit of First Year CSE Students
Title/Theme of the Event	Industrial Visit to Samskrithi Business Solutions, Hyderabad
Details of CSI SB Counsellor	Dr.K.Madhavi, Professor, CSE Department
Nominee Faculty Members	M.V.Sreekanth Reddy, Asst.Professor V.Vinay Kumar, Asst.Professor
Details of CSI President and secretary	M Spoorthi (CSE 1 st Year) Siddharth(CSE 1 st year)
Date(s) on which event is held	12 th , 13 th , 14 th December 2019
Target Audience (Teaching Faculty/ Non-Teaching Faculty/ Students)	Student Branch Core Committee Members



GOKARAJU RANGARAJU INSTITUTE OF ENGINEERING AND TECHNOLOGY COMPUTER SOCIETY OF INDIA



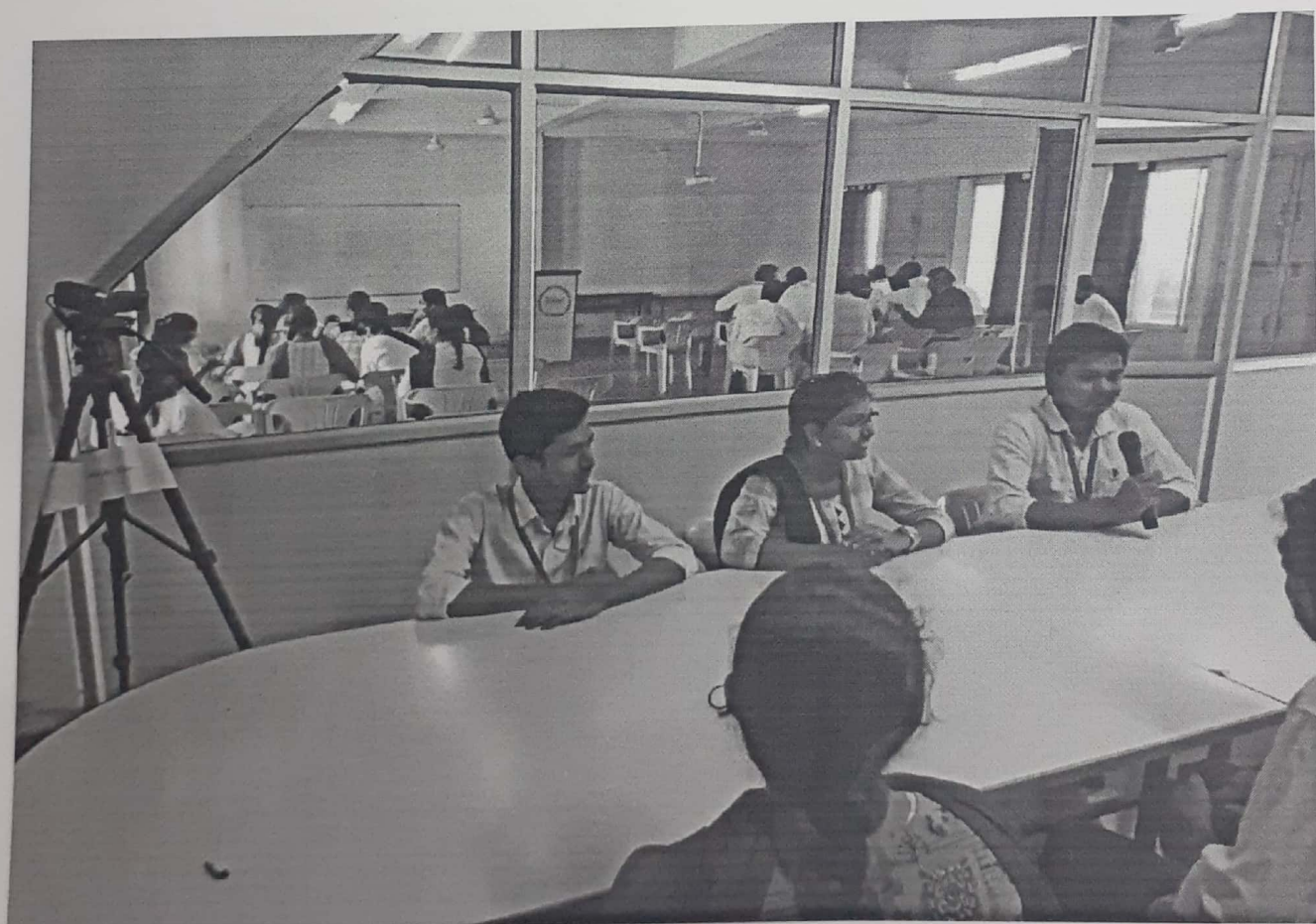
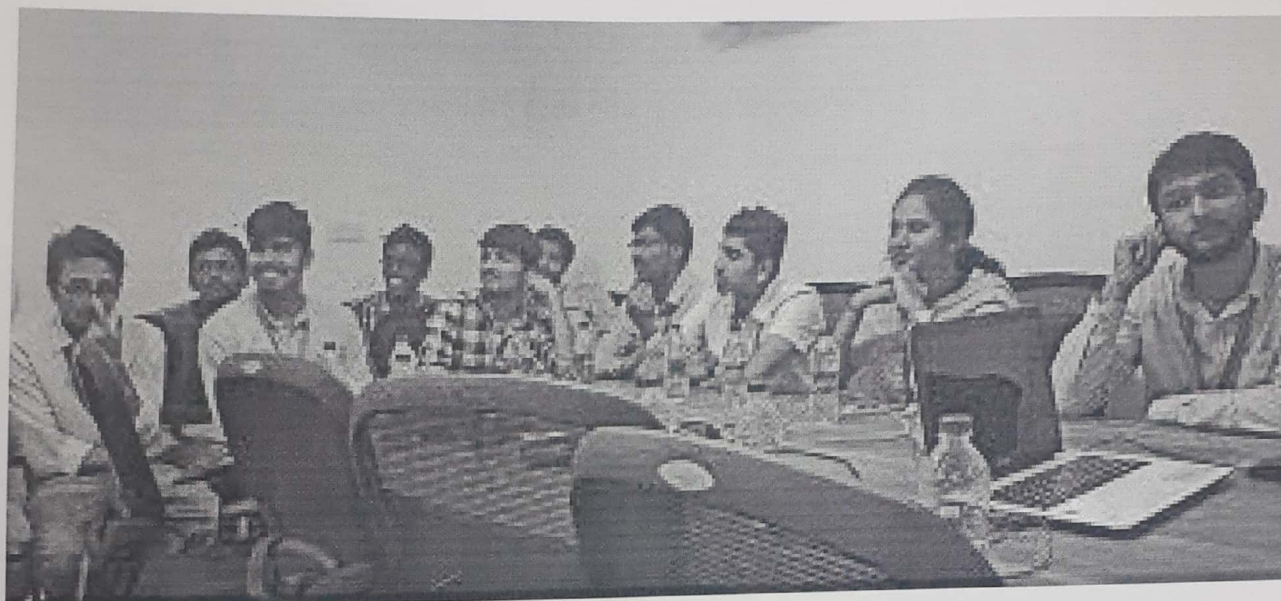
<p>Summary of the event</p>	<p>The executive student body of the CSI visited the Samskriti Business Solutions located at Somajiguda, Hyderabad. This visit was categorized into 4 sessions. The first session was conducted by Sirisha Bhandari who gave us an presentation on Digital Marketing, about its functioning and uses and also about its Tools. The 2nd session was led by Pranaya Reddy who gave us a brief description on Web Analysis. The next phase of the session was held by the CEO Sravan Kumar who gave us an outline about his career and his accomplishments and the opened a chit-chat session where we put forward our queries. We then had the luck of a bonus session in which a client from New Zealand and a very close friend of the CEO shared his experiences and also answered our questions. This visit was successfully completed under the guidance and support of HOD Sir, CSI SB Counsellor, Nominee Faculty.</p>
<p>POs attained with this Event</p>	<p>PO3, PO5, PO8, PO9, PO10, PO11, PO12</p>
<p>Photographs of the event</p>	



GOKARAJU RANGARAJU

INSTITUTE OF ENGINEERING AND TECHNOLOGY

COMPUTER SOCIETY OF INDIA





GOKARAJU RANGARAJU

INSTITUTE OF ENGINEERING AND TECHNOLOGY

COMPUTER SOCIETY OF INDIA



S:NO	Roll NO	NAME
1	19241A0501	AISHWARYA PERI
2	19241A0502	AMERINENI SAHITHI
3	19241A0503	BANURU KRISHNA CHAITANYA REDDY
4	19241A0504	BATTULA NAGA DATHA SAIKIRAN
5	19241A0505	BHUKYA NARESH
6	19241A0506	BODDULURI ANJANI SREEMANTH
7	19241A0507	BONAKOLLURU AJAY KUMAR
8	19241A0508	CHALLA SAI CHARAN
9	19241A0509	CHENNURI SARITHA
10	19241A0510	CHINTA ABHINAV
11	19241A0511	CHUNDURI JAHNAVI
12	19241A0512	DANDU PAVAN
13	19241A0514	DHARAVATH DIVYA
14	19241A0515	DHARAVATH MAMATHA
15	19241A0516	EDDU SIDDARTHA
16	19241A0517	GOPALDINNE KOUSHIK REDDY
17	19241A0518	HARISH ROHAN KAMBHAMPATY
18	19241A0519	JAMPANI HEMANTH
19	19241A0523	KONDAMADUGULA SAI GANESH REDDY
20	19241A0524	KUPPALA MEGHANA
21	19241A0525	KURAKULA HARI VENKATA KARTHIK
22	19241A0526	M SPOORTHI
23	19241A0527	MADAKA ANIRUDH VARMA
24	19241A0528	MALLU SHASHANKREDDY
25	19241A0529	MANDAVA KUMUDINI
26	19241A0530	MARELLA TARUN VIJAY
27	19241A0531	MOGULLA PALLAVI
28	19241A0532	MOHAMMED YASEEN ALI
29	19241A0533	LAKSHMAN CHOWDARY MOPARTHY
30	19241A0534	MUKKARI INDU
31	19241A0535	MUKTHEWARAM SREE AKSHITHA
32	19241A0536	NALLAGONDU REVANTH KUMAR REDDY
33	19241A0537	NAWAPETA PRASHANTH REDDY
34	19241A0538	NIKHIL GODALLA
35	19241A0539	NOOKA SWETHA
36	19241A0540	P A SUJASRI
37	19241A0541	PEDASINGU LAKSHMI SOUMYA
38	19241A0542	PODDUTURI HARSHA VARDHAN REDDY
39	19241A0546	SAAKETH HOTA
40	19241A0547	SAGINALA RAJU



GOKARAJU RANGARAJU

INSTITUTE OF ENGINEERING AND TECHNOLOGY

COMPUTER SOCIETY OF INDIA



41	19241A0548	SATYA ANVESH RANGANADHAM
42	19241A0549	SHERI SAHITH REDDY
43	19241A0550	SIDDHARTH NANDIWADA
44	19241A0551	SIRIKONDA MANASA
45	19241A0552	SIVAPURAM VENKATA VARSHITH
46	19241A0553	SOMA ANITHA
47	19241A0559	VATSAVAYA JASVITHA
48	19241A0560	YALAVARTHI SREEJA
49	19241A0561	ANEES FATHIMA
50	19241A0562	ARKE NIKETH YADAV
51	19241A0563	BANDI PRAVALLIKA
52	19241A0567	CHIPPALAPALLY JHANSI
53	19241A0568	CHOLLETI SINDHU SRI
54	19241A0569	DESHMUKH ANIKETH
55	19241A0570	GADDAM SRI PRIYA REDDY
56	19241A0571	GANJI VISHNUVARDHAN REDDY
57	19241A0572	GOVARDHANAGIRI SAI MANEESH
58	19241A0573	GUNISETTY JAGADESHWARA SAI
59	19241A0574	HARSHANKAR SAI REDDY GUDUR
60	19241A0580	KOLTHURI SPANDAN REDDY
61	19241A0581	KONAGALA VINEELA
62	19241A0582	LAKAVATH RAJESH
63	19241A0583	M SREE KAVYA
64	19241A0584	MANTHRIPRAMOD SAI SUSHANK
65	19241A0585	MODUGU AJAY KUMAR
66	19241A0586	MOHAMMED ZEESHAN
67	19241A0587	MOHD MUZAMMIL
68	19241A0588	NALLA KSHITHIJ REDDY
69	19241A0589	NANDOORI VASAVI
70	19241A0590	NERAVETLA HRUSHIKESH REDDY
71	19241A0591	P HARSITH REDDY
72	19241A0592	P VIKAS
73	19241A0593	PANDITI STELLA PRASHASTHI
74	19241A0594	PANUGULA RAM
75	19241A0595	PARAGATI VIJAY KUMAR
76	19241A0596	PAVAN SRI SURYA SAI VEMURI
77	19241A0597	PEDDAPURAM MAHESH
78	19241A0598	POKALA SAI TEJA
79	19241A0599	PRODDUTURI SHVITHI
80	19241A05A0	RACHAMALLA CHARATH REDDY
81	19241A05A1	S SAHITHI REDDY
82	19241A05A2	SALUNKHE PREETHI
83	19241A05A3	SANGITA VEDH SIVAJI KUMAR



GOKARAJU RANGARAJU

INSTITUTE OF ENGINEERING AND TECHNOLOGY

COMPUTER SOCIETY OF INDIA



84	19241A05A4	SANNAPU RITHWIK
85	19241A05A5	SATHISH REDDY SHAPURAM
86	19241A05A6	SELVAMUTHIAH GOMATHY
87	19241A05A7	SIDHARTH NOOKALA
88	19241A05A8	SNEHITH REDDY JAGGARI
89	19241A05A9	SWAPNEEL KULKARNI
90	19241A05B0	TEJASWINI PRIYANKA VEDULA
91	19241A05B1	THOTA SAINAVEEN
92	19241A05B2	UMMADISETTY LAHARI
93	19241A05B3	VADA RAJ MOHAN KUMAR
94	19241A05B4	VADLA RAHUL
95	19241A05B5	VAJJA DHARANI
96	19241A05B6	VELAMURI AJAY KUMAR REDDY
97	19241A05B7	VISHWANATHA SAI CHARAN
98	19241A05B8	YAMANA SATHWIK
99	19241A05B9	YARAMALA RESHMA REDDY
100	19241A05C0	VEGESNA ABHIRAMARAJU
101	19241A05C1	A SHISHIR KUMAR
102	19241A05C2	ABHINAV CHAKILAM
103	19241A05C3	ALETI SAI SHASHANK
104	19241A05C4	BACHINA PAVANI
105	19241A05C5	BAINDLA HARINATH
106	19241A05C6	BANOTH KAVYASREE
107	19241A05C7	BAPATHU NAGA NAINIKA
108	19241A05C8	BATTHULA PRANAY
109	19241A05C9	BETHAM PREM CHAND
110	19241A05D0	CHALLA SREESANJANA
111	19241A05D1	CHIMMULA PRANAV REDDY
112	19241A05D2	DASARI SAI VAMSHI
113	19241A05D3	SAI SUMANTH DHARAVATH
114	19241A05D4	DILLI AKSHARA
115	19241A05D5	DOODALA KUSHAL GOUD
116	19241A05D6	GANDAMALA PAVAN
117	19241A05D7	GUDALA SHASHANK
118	19241A05D8	GURRAM AKSHAY REDDY
119	19241A05D9	G VISHNU TEJA
120	19241A05E0	KAKARLAPUDI SOUNDARYA
121	19241A05E1	KAKILETI SUCHARITA
122	19241A05E2	KASHIPAKA ANIL KUMAR
123	19241A05E3	KIRIT ENUGA
124	19241A05E4	KODATI SRUJANA
125	19241A05E5	KOLLURU NITISH
126	19241A05E6	KOTA NAVEEN



GOKARAJU RANGARAJU

INSTITUTE OF ENGINEERING AND TECHNOLOGY

COMPUTER SOCIETY OF INDIA



127	19241A05E7	KUDI KYALA NIKHIL
128	19241A05E8	KUMMARI NAVEEN
129	19241A05E9	MANCHIKANTI VISWA SOWRABH REDDY
130	19241A05F0	MEDARAMETLA SAI ROHITH REDDY.
131	19241A05F1	MUDETHULA SAI VISHESH
132	19241A05F2	NAGENDRAM VINOD
133	19241A05F3	NAREDLA PHANEENDRA REDDY
134	19241A05F4	NUTHANKI SAHITI
135	19241A05F5	P N S TEJO PRATARDANUDU
136	19241A05F6	P PRANAY PRASAD
137	19241A05F7	PAGADALA SRUJANA
138	19241A05F8	PEDDI STEPHEN
139	19241A05F9	PENMETSA MANAS SRI SAI VARMA
140	19241A05G0	PICHUKA MANOJ KUMAR
141	19241A05G1	POCHIRAJU DHANAMJAYA
142	19241A05G2	RAGIPANI SAI RAMANA
143	19241A05G3	RAPOLU REVANTH
144	19241A05G4	REETHIKA TEKUMATLA
145	19241A05G5	RUDRARAPU SAI KUMAR
146	19241A05G6	SADHU MADHUR
147	19241A05G7	SAI LALITHA SHREYA BANDHAKAVI
148	19241A05G8	SAI SUPREETH GOUD ARUKALA
149	19241A05G9	SAMEYA KHATUN
150	19241A05H0	SHAISTRULA DEEKSHITHA
151	19241A05H1	SHRUTI BHAT
152	19241A05H2	SRI VISHRUTH GANGANABOINA
153	19241A05H3	SUNKARA ANU PALLAVI
154	19241A05H4	SYED MIZBAHUDDIN
155	19241A05H5	THOUTI BHARATH KUMAR
156	19241A05H6	TULASI SANJANA UTUKURI
157	19241A05H7	V R SHRAVANI
158	19241A05H8	Y JAYANTH
159	19241A05H9	YERUBANDI ANITHA
160	19241A05I0	ZEB NAAZ
161	19241A05I1	BAKI DIVYASREE
162	19241A05I2	BATTU NAGA VAMSHI
163	19241A05I3	CHENNOJI VENKATA DHEERAJ
164	19241A05I4	CHINTALA MANASA
165	1924A105I5	DANGATLA SHIRISHA
166	19241A05I6	DUGYALA AJITH KUMAR
167	19241A05I7	EDLAKADI AJAY
168	19241A05I8	EDUPUGANTI ROHITHSEKHAR
169	19241A05I9	G H S SATHWIK RUDRARAJU



GOKARAJU RANGARAJU

INSTITUTE OF ENGINEERING AND TECHNOLOGY

COMPUTER SOCIETY OF INDIA



170	19241A05J0	GANTI SATYA SAI SURYA VINAY
171	19241A05J1	GONGADA GAUTHAM
172	19241A05J2	GOWTHAM KUMAR KHAITAN
173	19241A05J3	JADI AMULYA
174	19241A05J4	JASHWANTH NAIDU MADASU
175	19241A05J5	K N D V SURYA RAGHAV
176	19241A05J6	KAMANI VARUN KUMAR
177	19241A05J7	KANAKALA SAI CHARAN
178	19241A05J8	KARINGULA DEEKSHITA
179	19241A05J9	KOKKULA SRIRAM
180	19241A05K0	KOPPULA GOPAL KRISHNA REDDY
181	19241A05K1	KOTAGIRI ANJANI NIMISHA
182	19241A05K2	KUCHANA VIKAS
183	19241A05K3	KUNUKU JAHNAVI
184	19241A05K4	LAKSHMI SOUNDARYA REDDY TETALA
185	19241A05K5	M PRANIT
186	19241A05K6	M SAI SANDEEP NAIK
187	19241A05K7	MADDI NAVEEN KUMAR
188	19241A05K8	MAGANTI EASHWARI GAYATHRI
189	19241A05K9	MANDRU DISHA
190	19241A05L0	MARPADGA PREETHI
191	19241A05L1	MEESALA ANJALI NIRUPAMA
192	19241A05L2	MOHAMMED AZEEMUDDIN
193	19241A05L3	MOHD NASEER UDDIN
194	19241A05L4	MULINTI SATYA SAI JAHNAVI
195	19241A05L5	NANDIKATTI DURGA BHAVANI
196	19241A05L6	NAVULURU VENKATA SUBBAIAH PAVAN KARTHIK
197	19241A05L7	NUTHALAPATI VENKATA ABHIRAM
198	19241A05L8	PASUPULETI NIKHIL SIDDARDHA
199	19241A05L9	PENTELA UJWALA
200	19241A05M0	PRADYUMNA SINHA
201	19241A05M1	PUCHAKAYALA NARASIMHA REDDY
202	19241A05M2	RAYINI HRUTHIK
203	19241A05M3	REDDAMMAGARI ARNESH REDDY
204	19241A05M4	S SREE
205	19241A05M5	SAI KUMAR JADAV
206	19241A05M6	SAI VENKATA KALKI ANAND THOTA
207	19241A05M7	SANDAGIRI VAISHNAVI REDDY
208	19241A05M8	SINGIREDDY AKHIL KUMAR REDDY
209	19241A05M9	SEELAMSETTI NANDINI KRISHNA
210	19241A05N0	SEETHA CHANDRA SHEKAR
211	19241A05N1	SOWBHAGYA MOHANTHY



GOKARAJURANGARAJU

INSTITUTE OF ENGINEERING AND TECHNOLOGY

COMPUTER SOCIETY OF INDIA



212	19241A05N2	SRAVAN KUMAR CHAWAN
213	19241A05N3	SUPPALA PAVAN TEJA
214	19241A05N4	SUTRAVE SWATHI
215	19241A05N5	U ANAND
216	19241A05N6	V SNEHA MADHURI
217	19241A05N7	VANGAPALLY SHREYA
218	19241A05N8	VANGAPANDU SANDHYA
219	19241A05N9	VARIKUPPALA PRAVEEN KUMAR
220	19241A05O0	VUMMENTHALA SRIJA
221	19241A05O1	AKURAJU MOUNIKA CHOWDARY
222	19241A05O2	ALLE MEGHANA
223	19241A05O3	ANURAAG REDDY K
224	19241A05O4	APPARABOINA SOWMYA
225	19241A05O5	ATIKAM ABHISHEK
226	19241A05O6	ATLURI VENKATA SRIKAR CHOWDARY
227	19241A05O7	AYYAGARI SAI CHARAN
228	19241A05O8	BHANDA SHIVANI
229	19241A05O9	BHARADWAJ CHERUVU
230	19241A05P0	BOMMU SIDDU
231	19241A05P1	CHANDRAKANTH SAI PRAVEEN KONA
232	19241A05P2	CHATRE MRUNAL
233	19241A05P3	CHEKURI DEVI HEMA
234	19241A05P4	CHEKURI SRI VINUTNA
235	19241A05P5	CHENNAMANENI SUKRUTHI RAO
236	19241A05P6	CHIDRAPU SHRESHTA
237	19241A05P7	CHILUKA RAMAKRISHNA
238	19241A05P8	CHINTA KRISHNA TEJ
239	19241A05P9	DAMARA TANUSHA
240	19241A05Q0	DASARI SHRUTHI
241	19241A05Q1	DONAVALLI PRAVALIKA
242	19241A05Q2	GARIMIREDDY SIVA PRAKASH REDDY
243	19241A05Q3	GOLLA ANJALI
244	19241A05Q4	HEMANTH RAJ DUGYALA
245	19241A05Q5	JANGAM ADITYA
246	19241A05Q6	KADIYAM SIRISHA
247	19241A05Q7	KALIDINDI RITISHA VARMA
248	19241A05Q8	KATKAM SAKETH
249	19241A05Q9	KATTA SRI SAI KUMAR
250	19241A05R0	KOKA GANESH
251	19241A05R1	KONDAPARTHI SRIKANTH
252	19241A05R2	KONGARI PRASHANTH
253	19241A05R3	KOTHAPALLI SUSHMA
254	19241A05R4	MADA NIKHIL
255	19241A05R5	MAHAJAN HITESH
256	19241A05R6	MAHITH CHOWDARY CHALAPATI
257	19241A05R7	MALKAPURAM PAVAN KUMAR



GOKARAJU RANGARAJU

INSTITUTE OF ENGINEERING AND TECHNOLOGY

COMPUTER SOCIETY OF INDIA



258	19241A05R8	MEHRAJUNNISA BEGUM
259	19241A05R9	MOLUGU SREYAS REDDY
260	19241A05S0	NARGEES
261	19241A05S1	PALLA PRAVEEN
262	19241A05S2	PALLERLA MAHESH
263	19241A05S3	POOSA PRAVEEN KUMAR
264	19241A05S4	POTHANABOINA UMA SAI
265	19241A05S5	PUCHHAKAYALA SRAVYA
266	19241A05S6	RAGHUMANDALA TEJESHWARA RAO
267	19241A05S7	RAYANKULA DEEPAK CHOWDARY
268	19241A05S8	RENUKUNTA YASHWANTH
269	19241A05S9	RUDRARAM ADITHI
270	19241A05T0	SAI KIRAN K
271	19241A05T1	SHAIK ARSHAD
272	19241A05T2	SUDHAGONI ARYAN
273	19241A05T3	SUNKARI SUKESH
274	19241A05T4	V S VAISHNAVI
275	19241A05T5	VEMPARALA SRI MAUKTHIKA
276	19241A05T6	VENAGANTI YASHWANTH
277	19241A05T7	VOGGU TARUNKUMAR
278	19241A05T8	VUDATHA SRI SANTOSH NARAYAN
279	19241A05T9	YARLAGADDA KSHIRAJA
280	19241A05U0	YELLANKI HEMA RISHITHA
281	19241A05U1	ABBINENI HARSHITHA
282	19241A05U2	ADDANKI CHANDRAHAS BABU
283	19241A05U3	AVUTHU DEVENDAR REDDY
284	19241A05U4	BATHULA SASANK SAI NAGA CHOWDARY
285	19241A05U5	BETHI VISHNU VARDHAN REDDY
286	19241A05U6	BILLA VIPLAV
287	19241A05U7	C V RAHUL REDDY
288	19241A05U8	CHITIPROLU HARSHITHA
289	19241A05U9	D ROHIT RAJAN
290	19241A05V0	DIRISALA SAI CHIKITHA CHOWDARY
291	19241A05V1	EGURAM SRIDHAR REDDY
292	19241A05V2	ELUR NAVEEN KUMAR
293	19241A05V3	ENUGALA YUGENDER
294	19241A05V4	ENUGOLLU UMANANDH REDDY
295	19241A05V5	GINNEGOLLA HEMA VENKATA SAI TEJA
296	19241A05V6	GUNDA VASU SENA
297	19241A05V7	GUTHI NAVEENA
298	19241A05V8	KALLAM ALEKHYA REDDY
299	19241A05V9	KANNAN VIJAYARAGHAVAN
300	19241A05W0	KARRA PAVAN
301	19241A05W1	KONDAKALA JITHENDER
302	19241A05W2	KUNDELU RAJINIKANTH
303	19241A05W3	MARATI VINEETHA



GOKARAJU RANGARAJU

INSTITUTE OF ENGINEERING AND TECHNOLOGY

COMPUTER SOCIETY OF INDIA



304	19241A05W4	MATAM VINEETH KUMAR
305	19241A05W5	MOHAMMAD KHAJA FAIZAN
306	19241A05W6	MUNDLAPATTI ANKITHA
307	19241A05W7	N SATHWIK
308	19241A05W8	NAGULA VAMSHI RAJ
309	19241A05W9	NALLAPAREDDY SASHANK
310	19241A05X0	NERELLA LIKHITHA
311	19241A05X1	NICHENA ANIL
312	19241A05X2	NITIN SAI VARMA INDUKURI
313	19241A05X3	PALAKURTHI NANDINI
314	19241A05X4	PANDRINKI RAGHAVENDRA
315	19241A05X5	PANGA YASHWANTH REDDY
316	19241A05X6	PERUMALLA PRATHAP
317	19241A05X7	PILLALAMARRI AKSHAY
318	19241A05X8	PINAGANI SHREYA
319	19241A05X9	POCHAMPALLY RISHITHA REDDY
320	19241A05Y0	PULAVARTHI KALYANI SAI NIKITHA
321	19241A05Y1	RUKKAMOLLA SAI KIRAN REDDY
322	19241A05Y2	SAI AKHIL VARMA VEGESNA
323	19241A05Y3	SAI LIKHITHA AVUPATI
324	19241A05Y4	SAI PRANAVI JEEDIGUNTA
325	19241A05Y5	SHANIGARAM PRANEETH
326	19241A05Y6	SHETTY ANANYA SRI
327	19241A05Y7	SIDDULA SHRUTHI
328	19241A05Y8	SREYA RAVI
329	19241A05Y9	TALLA NIKHILESHWARA REDDY
330	19241A05Z0	TELAGAREDDY SAI CHAND
331	19241A05Z1	ULAVALAPUDI SUHAS
332	19241A05Z2	V SAI VINEETA
333	19241A05Z3	VAISHNAVI
334	19241A05Z4	VALABOJU RUCHITA
335	19241A05Z5	VAMSHI SAMINENI
336	19241A05Z6	VANGA TUSHAR REDDY
337	19241A05Z7	VASAM AKHIL KUMAR
338	19241A05Z8	VIGNESH SURAMPALLI
339	19241A05Z9	YASASWINI SAI AKKALA
340	19241A051A	YERUVA RITHVIK REDDY

CSE Branch Coordinator First Year

HOD (BS&H)



GOKARAJURANGARAJU

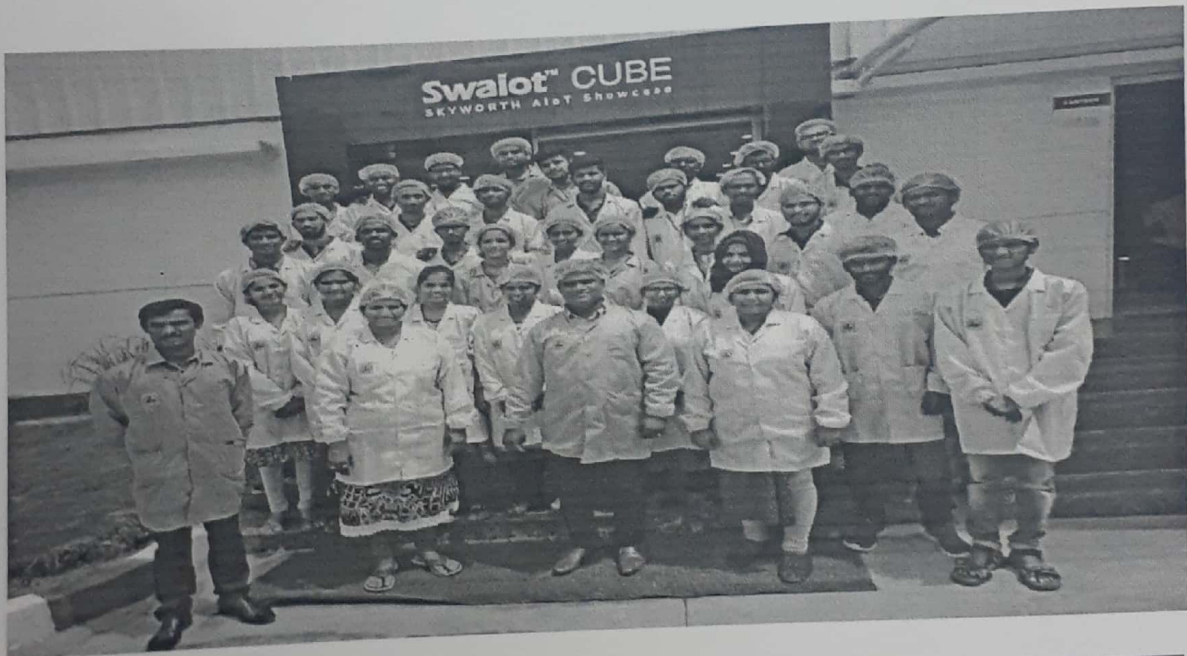
INSTITUTE OF ENGINEERING AND TECHNOLOGY

Nature of the Event (Workshop/Guest lecture/ Membership drive/ Seminar/Training program/Industrial visit/Talk /FDP/GD/Quiz/Presentation Lecture/Seminar/Membership	Industrial Visit (Radiant Appliances and Electronics Pvt. Ltd. Plot no S-2 A1 Survey No. 111, 112, E City Fab City Ravirala Village Maheshwaram Mandal R.R. District Hyderabad - 501359 TS India)
Title/Theme of the Event	Led TV Assembling Unit
Nominee Faculty Members	D. Suguna Kumari, Asst Prof R. S. Shalini, Asst Prof
Date(s) on which event is held	26 th , 27 th , 28 th September 2020
Details of the Speaker /Guest Name Organization	Shri Mahendar R & D Engineer Radiant Appliances and Electronics Pvt. Ltd.
Target Audience (Teaching Faculty/ Non-Teaching Faculty/ Students)	Student-250 Faculty-2
Summary of the event	A total of 250 students along with 2 faculty have visited Radiant Appliances & Electronics Pvt Ltd on Sep 30 th 2019. Radiant Appliances & Electronics Pvt Ltd Operate in the domain of Electronics Manufacturing and cater to various industry verticals like Consumer, Telecom and Appliances like Washing Machines, Air & Water Purifiers etc.
POs attained with this Event	PO b. Ability to design and conduct experiments, as well as to analyze and interpret data. PO c. Ability to design a system, component, or process to meet desired needs within realistic constraints such as economic, environmental, social, political, ethical, health and safety, manufacturability, and sustainability. PO d. Ability to function on multi-disciplinary teams. PO e. Ability to identify, formulate, and solve engineering problems.



GOKARAJURANGARAJU INSTITUTE OF ENGINEERING AND TECHNOLOGY

Photographs of the event





GOKARAJURANGARAJU

INSTITUTE OF ENGINEERING AND TECHNOLOGY

SNO	ROLL NO	STUDENT NAME
1	19241A0401	JUNAID MAQBOOL PARRAY
2	19241A0402	AAVULA SAI SHIVA
3	19241A0403	ADEPU ABHIRAM
4	19241A0404	ARANGI ABHINAY
5	19241A0405	AVASARALA GOPALA KRISHNA SRI HARSHA
6	19241A0407	BALLA DEEPIKA
7	19241A0408	BASANI HARSHAVARDHAN REDDY
8	19241A0409	BATHINI ARAVIND GOUD
9	19241A0410	BATHINI SHIVA GOUD
10	19241A0411	BHUKYA MAMATHA
11	19241A0413	CHANUMOLU HIMA BINDU
12	19241A0414	CHITTAPU MAHESHWAR REDDY
13	19241A0415	DEVARAPALLI HEMANTH REDDY
14	19241A0416	DEVARAPALLI JOSHUA SUNDARAM
15	19241A0417	DOMA SHIVA PRASAD REDDY
16	19241A0419	GADE HEMANTH SAI
17	19241A0420	GANESHNA SRI KRISHNA KIREETI
18	19241A0421	GUDURU VARALAXMI
19	19241A0422	JOGI PAVAN KUMAR
20	19241A0423	KODIMELA PAVAN
21	19241A0425	KUDULLA GOWTHAM SRI HARSHA
22	19241A0426	MAMIDI NAGA TEJASWI
23	19241A0427	MANDALA HARSHITH
24	19241A0428	MANGALA DIVYA
25	19241A0430	MOHAMMED SOHAIL
26	19241A0431	MULA REENA
27	19241A0432	MUMMADI SAI CHARAN
28	19241A0434	NAGANDLA VENKATA VIGNESH TEJA
29	19241A0435	NALLANTLA JASWANTH VARMA
30	19241A0436	NEELAM VINAY SESHU
31	19241A0437	NIMMAGADDA DIVYA CHAND
32	19241A0438	P JEEVANA SHRESHTA
33	19241A0439	PALAGIRI VARSHA
34	19241A0440	PATLOLLA SAIKEERTHANA
35	19241A0444	ROHITH YALLA
36	19241A0445	SANGIREDDY THARUNI
37	19241A0446	SHAIK SADAF ANJUM
38	19241A0447	SIDDHANTH AGARWAL
39	19241A0448	SOMA SOUKYA REDDY
40	19241A0449	SUDAMALLA SAI PREETHI
41	19241A0450	TENE PRANEETH REDDY
42	19241A0451	THIMMAIAHGARI ANISH REDDY
43	19241A0453	TUMMALA SAI GOPI
44	19241A0454	VALMETI SAI SANGHAVI
45	19241A0455	VANGURI AISHWARYA
46	19241A0456	VARAGANTI SRI SHARAN



GOKARAJURANGARAJU

INSTITUTE OF ENGINEERING AND TECHNOLOGY

47	19241A0457	VEDURU BHAVANI REDDY
48	19241A0458	VINEET SINGH
49	19241A0459	YAPATI VAMSHI
50	19241A0460	YARLAGADDA SREE SAI SRAVANTHI
51	19241A0461	ABHISHIKTH VARMA INDUKURI
52	19241A0462	AINDLA CHETANA REDDY
53	19241A0465	BARU VENKATA ASHRAY
54	19241A0466	BHUKYA ANU
55	19241A0467	BIRADHAR SHIVANANDA
56	19241A0468	BOBBERLA NEHA
57	19241A0469	BUDATI KIRAN SAI
58	19241A0470	BUDDARAJU HARSHA VARDHAN RAJU
59	19241A0471	BUYA VINOD GOUD
60	19241A0472	CHAVA VARUN
61	19241A0473	CHEEDU VENKAT SAHITH REDDY
62	19241A0474	CHERUKUMALLI LIKHITH
63	19241A0475	CHETHAN PALLEMPATI
64	19241A0476	CHIDITHOTI AKHILA
65	19241A0478	DUDALA ESHWAR
66	19241A0479	DUTTA KRUTHIKA
67	19241A0480	GAJJALA GANESH
68	19241A0481	GANDWEED YELLA REDDY
69	19241A0482	GAYAM KALHARA
70	19241A0484	GIDDALURU VENNELA
71	19241A0485	GUBBA SAI KUMAR
72	19241A0486	HRUSHIKESH SRIRAMOJU
73	19241A0487	JYOTHULA LAKSHMI HANISHA
74	19241A0488	KANCHARLA AKHILA
75	19241A0489	KANDULA RAMAKRISHNA
76	19241A0490	KESHAV ABHAY SHAH
77	19241A0491	KOMARAPALEM SIRI CHANDANA
78	19241A0492	KOMMURI SRI HARSHA VINAY
79	19241A0493	KOTHAPALLI TEJASWINI
80	19241A0494	KOTHAPALLY ADITYA REDDY
81	19241A0497	KUPPA SREE ANANDA VALLI
82	19241A0498	M ADARSH
83	19241A0499	MADDEBOINA SRINIVAS
84	19241A04A0	MAMIDISETTE PAVAN KUMAR
85	19241A04A1	MARISSETTY VEDADHAR KRISHNA
86	19241A04A2	MOGALAGANI TRIVENI
87	19241A04A3	MUDDAM USHA SRI
88	19241A04A4	NAGA SIRI CHANDANA KONIDALA
89	19241A04A5	NALLURI SRI SIDDHARDHA
90	19241A04A6	SALLA RAJU
91	19241A04A7	SALWADI SRUJAN
92	19241A04A8	SAMBARI BINDHU PRIYA
93	19241A04A9	SANGANNAGARI VENI SREE
94	19241A04B0	SATTINENI DURGA NAGA SRI SAI MANIKANTA
95	19241A04B1	SAYYAD KHASIM
96	19241A04B3	SUGGU PAVAN



GOKARAJURANGARAJU

INSTITUTE OF ENGINEERING AND TECHNOLOGY

97	19241A04B4	SURAGONI HARSHA VARDHAN GOUD
98	19241A04B5	SURRAMSETTI CHARAN TEJA
99	19241A04B6	THANNERU SAI HARSHITH
100	19241A04B7	THOLETI POOJITHA
101	19241A04B8	ULLANKALA SRI LAKSHMI
102	19241A04B9	VEERABATHINI PRANAY SRINIDHI
103	19241A04C0	YELURIPATY BHASKARA RAGHAVA
104	19241A04C1	AISHWARYA BUYYA
105	19241A04C2	ARANGI HARSHA VARDHAN
106	19241A04C3	ARROLLA SHIVA
107	19241A04C4	AUJIGARI SANTHOSH REDDY
108	19241A04C5	B BINDU
109	19241A04C6	BANDARI RAKESH YADAV
110	19241A04C7	BANOTH SNEHA
111	19241A04C8	BAZARU VENKATA SAI NITHIN
112	19241A04C9	BUDDHI DINESH SARADHY
113	19241A04D0	CHALLABOTLA KARTHIK REDDY
114	19241A04D1	CHEVVURI SWARNA TEJASWI
115	19241A04D2	CHITLURI VENKATA SAI KARHTIK
116	19241A04D3	D RAGAVI
117	19241A04D4	DARAVATH ANIL
118	19241A04D5	GADDAM SURYA KIRAN
119	19241A04D6	GANDLA NIMISHKA
120	19241A04D7	GANDLA RUCHITH
121	19241A04E1	IRUVURU MANOGNA
122	19241A04E2	J ANDREWS
123	19241A04E3	K NARESH
124	19241A04E4	K SATHYA SAI PHANI KUMAR VARMA
125	19241A04E5	KAKINADA LEELAVATHI
126	19241A04E6	KANDHADA SAI NITHIN
127	19241A04E7	KAVALI RAGHUVAMSI VALMIKI
128	19241A04E8	KOTHA PAVAN REDDY
129	19241A04E9	KUNAPAREDDI SAI VENKAT
130	19241A04F0	MADDI KAVYA REDDY
131	19241A04F1	MARTHALA DHANUSH
132	19241A04F2	MOGULLA RAGHU VARDHAN REDDY
133	19241A04F3	MOHAMMED ABDUL HANNAN
134	19241A04F4	NADELLA PARDHU
135	19241A04F5	NELLURU SAI TEJA
136	19241A04F6	O SESA SAI TANMAYEE
137	19241A04F7	PADI MANASA
138	19241A04F8	PADMINI KOUSALYA MADHIRA
139	19241A04F9	PARUVU RAKHESH
140	19241A04G0	PATIBANDA SAI SRI SINDHU
141	19241A04G1	POTHULA MANIDEEP REDDY
142	19241A04G2	PUDURI SRI HARSHINI
143	19241A04G3	RAVIKANTI SAITEJA
144	19241A04G4	S BHARATH REDDY
145	19241A04G5	SAI ROHIT PAMULAPATI
146	19241A04G6	SAMEERA REDDY



GOKARAJURANGARAJU

INSTITUTE OF ENGINEERING AND TECHNOLOGY

147	19241A04G7	SANAPUREDDY SREE DHARANI REDDY
148	19241A04G8	SEENI SESA SATYA SAI
149	19241A04G9	SHAIK NAIMUDDEN
150	19241A04H0	SHETKAR ARAVIND
151	19241A04H1	SIDDAREDDY VENKATA ROHIT KUMAR REDDY
152	19241A04H5	THOTA BHAVANA
153	19241A04H6	THOTLA AKSHITHA
154	19241A04H7	VANGA SAHITH KUMAR
155	19241A04I0	VUPPALA TEJA
156	19241A04I1	ADEPU MAITHRESH
157	19241A04I2	AGA MOHAMMED HUSSAIN ISFAHANI
158	19241A04I6	ANTHAMOLLA MANIVARDHAN REDDY
159	19241A04I7	ARUMILLI ANJANIDEVI
160	19241A04I8	B L SRIHARI
161	19241A04I9	B PALLAVI
162	19241A04J0	B ROHAN
163	19241A04J1	BOBBALA SATWIK
164	19241A04J2	BOMMIREDDY DEEPAK REDDY
165	19241A04J5	CHAVATAPALLI NEERAJ
166	19241A04J6	CHELLU SRIRAMA MURHTY
167	19241A04J7	CHINTAGUMPULA JAYAKRISHNA SAI
168	19241A04J8	DAKARI SAGAR
169	19241A04J9	ETYALA KETHAN
170	19241A04K0	GOGIREDDY SREEJA
171	19241A04K1	GOWRAM YASHWANTH GOUD
172	19241A04K2	GUGULOTH MAHESH
173	19241A04K3	GUNTUKU SANDHYARANI
174	19241A04K4	H SAI PUNEETH
175	19241A04K5	HECHIRLA SHIRISHA
176	19241A04K6	JANGITI SHYAMSUNDER
177	19241A04K7	KAMBHAM VAMSIDHAR REDDY
178	19241A04K8	KAREDLA RAKSHITH REDDY
179	19241A04K9	KATIKIREDDY JYOTHI MANOHAR
180	19241A04L0	KATRAVATH SHARATH CHANDRA
181	19241A04L1	KESANA ANUHYA
182	19241A04L2	KOLLURI PRASHANTH
183	19241A04L3	MALOTHU CHARAN
184	19241A04L6	MOTUPALLI SAI JANARDHAN RAGHAVENDER
185	19241A04L7	NAGARAJU RAVI PAVAN SAI KRISHNA
186	19241A04L8	NALLA VINAY SANKEERTH
187	19241A04L9	NALLAM ESWARA SAI AKHIL
188	19241A04M0	NALLOLA JAYANTHI
189	19241A04M1	NALLURI MOHITH
190	19241A04M2	NASREEN
191	19241A04M3	PALA VINAY CHETHAN REDDY
192	19241A04M4	PARAVASTU VENKATA SAIRAMANA
193	19241A04M5	PILLI RISHIKA
194	19241A04M6	PULGAM AKSHITHA
195	19241A04M7	REGANDLA TEJASVINEELA
196	19241A04M8	SEERA HARIKA



GOKARAJURANGARAJU

INSTITUTE OF ENGINEERING AND TECHNOLOGY

197	19241A04M9	SHAIK BUSHRA
198	19241A04N0	SREEKAR KAMATAGI
199	19241A04N1	SRIPADA PRP Koushik Siddarth
200	19241A04N5	VANGAPALLY RICHBABU
201	19241A04N6	VARKALA TARUN SAI
202	19241A04N7	VEMULA THULASI KRISHNA
203	19241A04N8	VEMURI NIKHIL SAI
204	19241A04N9	VULUSU MAHESH KRISHNA
205	19241A04O0	YAMPATI SIREESHA
206	19241A04O1	A UDAYA SHANKER
207	19241A04O2	AADHI NAYAN RAO
208	19241A04O3	AITHA SAI VARUN
209	19241A04O7	ALLA SRI MADHULI
210	19241A04O8	BALLA SAI SIREESHA
211	19241A04O9	BANALA VISWA SAHITH
212	19241A04P0	BANDARI SACHIN KUMAR GOUD
213	19241A04P1	BANTU SAI ROHAN
214	19241A04P2	BRAHMANDLAPALLY ANIL
215	19241A04P3	BUSIM ANANTHA LAKSHMI
216	19241A04P4	C ABHISHEK
217	19241A04P5	CHALLA MEGHANA
218	19241A04P6	DEEVENA ILLURI
219	19241A04P7	DHARAHAS VENKAT GANESULA
220	19241A04P8	DUVVALA NAVEEN KUMAR
221	19241A04P9	ERRA KAVYA
222	19241A04Q0	G YEETHEENDRA
223	19241A04Q5	GORLA JETHIN REDDY
224	19241A04Q6	GOTTUMUKKALA GAYATRI
225	19241A04Q7	GUDELLI PRATHYUSHA
226	19241A04Q8	HANUMANTHUGARI VINAY KUMAR
227	19241A04Q9	JELLA PRAVALIKA
228	19241A04R0	KANKATI SRUTHA AISHWARYA
229	19241A04R1	KATKAM KAVYA
230	19241A04R2	KONDAIAHGARI PAVAN
231	19241A04R3	KUMMARI KARTHIK
232	19241A04R6	MANDA ARUN RAJ
233	19241A04R7	MANNE JASHWANTH SAI
234	19241A04R8	NAGULA NIKHIL
235	19241A04R9	PADIGELA JAYANTH
236	19241A04S0	PATHURI SREE MAHA LAKSHMI
237	19241A04S1	POPURI SUMANVITHA
238	19241A04S2	RACHARLA AKSHAY KUMAR
239	19241A04S5	RANDHI HARIKA
240	19241A04S6	RAVURI KARTIK
241	19241A04S7	RITHESH KULKARNI
242	19241A04S8	SAINNI KEERTHE
243	19241A04T3	SIRIPURAM MOULIKA
244	19241A04T4	SITARA KORLA
245	19241A04T5	T SRIKANTH
246	19241A04T6	THAKUR RITHIKA



GOKARAJURANGARAJU

INSTITUTE OF ENGINEERING AND TECHNOLOGY

247	19241A04T7	THIRUKOVELA RISHITHA
248	19241A04T8	THUDUM VARSHITH
249	19241A04T9	V PAVAN SAI KIRAN N
250	19241A04U0	VADRA NAVEEN

Signature of coordinator

1.

2.

Signature Of HOD(BS&H)



EEE

**Gokaraju Rangaraju Institute of Engineering and
Technology EVENT SUMMARY REPORT**

Nature of the Event (Workshop/Guest lecture/ Membership drive/ Seminar/Training program/Industrial visit/Talk /FDP/GD/Quiz/Presentation Lecture/Seminar/Membership)	Industrial Visit Batch Iys-EEE
Title/Theme of the Event	production and maintenance of Electric Locomotives, Electrical Multiple Units(EMUs) and Main Line EMUs(MEMUs). Traction Distribution, the maintenance of substations(PS) and Over Head Equipments(OHE) involved in movement of Rolling Stock.
Nominee Faculty Members	Dr.S.Rajeswari, Associate Professor Ms.P.Sirisha, Assistant Professor
Date(s) on which event is held	14 th February 2020
Details of the Speaker /Guest Name Organization	Mr. Srinivas, Electrical Engineer, South Central Railways,(Secunderabad Railway Station)
Target Audience (Teaching Faculty/ Non-Teaching Faculty/ Students)	Student-105 Faculty-2
Summary of the event	The Department of EEE has organized an industrial visit for I year EEE students on 14th Feb 2020 to Secunderabad Railway Station to know the base structure on which the railways function. Mainly divided in following branches General Service(G), Traction Operation(TrO), Traction distribution(TrD), Traction Rolling Stock(TRS). Traction Rolling Stock includes production and maintenance of Electric Locomotives, Electrical Multiple Units(EMUs) and Main Line EMUs(MEMUs). Traction Distribution includes the maintenance of substations(PS) and Over Head Equipments(OHE) involved in movement of Rolling Stock. These assets are monitored and controlled by SCADA system. This visit was successfully completed under the guidance and support of HOD Sir, Nominee Faculty.
POs attained with this Event	PO3, PO5, PO8, PO9, PO10, PO11, PO12

Photographs of the event



The Indian Railway Service of Electrical Engineers (IRSEE)

The Indian Railway Service of Electrical Engineers (IRSEE) is one of the group A central service of the Indian railways. The officers of this service are responsible for managing the Electrical Engineering organisation of the Indian Railways. The Indian railways have technical and non-technical departments for its operation and management which form the base structure on which the railways function. Technical departments include civil, electrical and mechanical engineering, signaling and telecom, and several others dealing with similar disciplines, control of operation and movement is done by traffic services (IRTS) while the non-technical departments include general services such as accounts, personnel management, Railway protection Force (RPF) or security, among others. Each department has staff at various levels. The highest are the Group A officers, while the lowest in rank are the Group D staff members. IRSEE falls under the category of Group "A" officer.

Role and function of electrical engineers in railways

The officers of this cadre are responsible to maintain the assets of the Electrical Department in Indian railways. Mainly divided in following branches General Service (G), Traction Operation (TrO), Traction distribution (TrD), Traction Rolling Stock (TRS). Traction Rolling Stock includes production and maintenance of Electric Locomotives, Electrical Multiple Units (EMUs) and Main Line EMUs (MEMUs). Traction Distribution includes the

Maintenance of substations(PS) and Over Head Equipments(OHE) involved in movement of Rolling Stock. These assets are monitored and controlled by SCADA system.

S.No.	Roll No	Name Of The Student
1	19241A0201	ABHIJIT PADHY
2	19241A0202	ADEPU SHIVA KUMAR
3	19241A0203	AFSHA SULTANA
4	19241A0204	AGGARAPU SIRI
5	19241A0205	AKKANAPALLY NIRANJAN
6	19241A0206	B MOUNIKA
7	19241A0207	BOJU ASWIN KUMAR
8	19241A0208	BUDAMAGUNTA SRI CHARAN
9	19241A0209	CHERUKUPALLY DEVARAJU
10	19241A0210	CHIDUGU SINDHU
11	19241A0211	CHINTAMANENI SAI SURYA VIDUL
12	19241A0212	CHINTHAPANTI MANIKANTA
13	19241A0213	D KAVYA KIRTHI
14	19241A0214	DHARMAPURI VEDAVYAS MANJUNATH
15	19241A0215	GAJULA LAKSHMI PRIYA
16	19241A0216	GANTA CHANDRA SEKHAR
17	19241A0217	GARDAS SRINIVAS
18	19241A0218	GORUPATI AKHILA
19	19241A0219	GUNDA ARJUN
20	19241A0220	JADHAV DATTAHARI
21	19241A0221	JALLA THARUNI
22	19241A0222	JANGAM SAIDEEP
23	19241A0223	JULA VAMSHI KRISHNA SAGAR
24	19241A0224	K RAVI ABHIRAM VARMA
25	19241A0225	KAKUNURI VENKATA AKASH REDDY
26	19241A0226	KALMI MANASA
27	19241A0227	KATKURI LAXMAN
28	19241A0228	KOLIKAPOGU RAM KUMAR
29	19241A0229	KUNCHALA VENKATA SAI
30	19241A0230	MALLAVARAPU LOHITH KUMAR
31	19241A0231	MANUPATI HARIKA
32	19241A0232	MEESALA DINESH
33	19241A0233	MOHAMMAD ABDUL SAMI
34	19241A0234	MOHAMMED YASEEN MALIK QURESHI
35	19241A0235	NARAGANI PRAVARDH
36	19241A0236	NIMMANAGOTI SOWMYA
37	19241A0237	NITHISH EDLA
38	19241A0238	ODIVETI NITISH KUMAR
39	19241A0239	PAKANATI KRISHNA BHASKAR
40	19241A0240	PALLAM SAI KEERTHANA
41	19241A0241	PANDILLA MADHAV
42	19241A0242	PERAVALLY VEDA PRANAV RAI
43	19241A0243	POLISSETTY SAMANVITA
44	19241A0244	PULI SHIREESHA
45	19241A0245	RATHOD ANIL

46	19241A0246	RAYABARAPU VISHNU
47	19241A0247	REVATHI G
48	19241A0248	SANAGAVARAPU HARI DEEPIKA
49	19241A0249	SANAM RAMA GANGADHAR
50	19241A0250	SARASWATHI SRIKARI
51	19241A0251	SIMHADRI RAJSHRI
52	19241A0252	SUCHISMITA DAS
53	19241A0253	RUPERO VAISHNAVI
54	19241A0254	TALAKAYALA LAHARI
55	19241A0255	TALLURI SASIDHAR
56	19241A0256	THATIPAMULA VIHAL
57	19241A0257	VAISHNAVI GORANTLA
58	19241A0258	VAKKALANKA SATYA SREYAS
59	19241A0259	VISHAL K
60	19241A0260	VODDU DEEPIKA
61	19241A0261	AILABOINA PRATHYUSHA
62	19241A0262	ALLEM RAMAKRISHNA REDDY
63	19241A0263	ANGADALA ROSHAN YADAV
64	19241A0264	ASAM SRINIDHI
65	19241A0265	B UMESH
66	19241A0266	BHUMA MAHESH
67	19241A0267	BONALA ANUSHA
68	19241A0268	C V S NIKHILA VARMA
69	19241A0269	C VENKATESHWARI
70	19241A0270	CHEKKIRALA ROHITH
71	19241A0271	CHELLA SAI KRISHNA
72	19241A0272	CHENNU VENKATA LAKSHMI PRIYANKA
73	19241A0273	CHOU L LAVITH
74	19241A0274	DODDI BHAVYA
75	19241A0275	GONAE HARSHA VARDHAN
76	19241A0276	GONE NAGA JYOTHI
77	19241A0277	GUJJULA PRATAP
78	19241A0278	JONNALAGADDA JHANSI
79	19241A0279	KARRI SUSHITH
80	19241A0280	KOTHAKOTA ROHANTH REDDY
81	19241A0281	M SHASHANK
82	19241A0282	MANJULA RAMBABU
83	19241A0283	MANUPURI MRUDHULA
84	19241A0284	MARAKALA DIVYA
85	19241A0285	MEGAVATH UMA
86	19241A0286	MURRA HARSHAVARDHANA REDDY
87	19241A0287	NAGILLA ANJALI
88	19241A0288	NAGIREDDY SHIVASMARAN REDDY
89	19241A0289	PADHIYAR SARTHAK YOGESH
90	19241A0290	PENDUR SAI TEJA
91	19241A0291	POTNURU SAI SRINIVAS
92	19241A0292	PRATEEK V
93	19241A0293	RUDROJU SUSHANTH
94	19241A0294	T SRIDHAR YADAV
95	19241A0295	SARANGA PREM SAI
96	19241A0296	SHAIK ASHRAF
97	19241A0297	SHAIK BABU SAHEB
98	19241A0298	SRAVANI BANNURU
99	19241A0299	SUMITH KUMAR NISHAD

100	19241A02A 0	THUHINESH REDDY CHALLA
101	19241A02A 1	V KARTHIK
102	19241A02A 2	VARAHABHATLA SUGUNA MANASA
103	19241A02A 3	VARALA SAI GANESH
104	19241A02A 4	VATTEM ROHITH SEKHAR
105	19241A02A 5	VEERAMANENI SUCHITHA

AP

Signature of coordinator

BSH

Signature Of HOD(BS&H)



GOKARAJU RANGARAJU

INSTITUTE OF ENGINEERING AND TECHNOLOGY

Nature of the Event (Workshop/Guest lecture/ Membership drive/ Seminar/Training program/Industrial visit/Talk /FDP/GD/Quiz/Presentation Lecture/Seminar/Membership	Industrial Visit
Title/Theme of the Event	Industrial Visit to Samskrithi Business Solutions, Hyderabad
Nominee Faculty Members	B Shanti Sree, Asst.Prof. G Kalpana, Asst.Prof.
Date(s) on which event is held	12 th February 2020
Details of the Speaker /Guest	Sirisha Bhandari
Name Organization	
Target Audience (Teaching Faculty/ Non-Teaching Faculty/ Students)	Student-160 Faculty-2
Summary of the event	<p>The executive student body of the CSI visited the Samskrithi Business Solutions located at Somajiguda, Hyderabad. This visit was categorized into 4 sessions. The first session was conducted by Sirisha Bhandari who gave us an presentation on Digital Marketing, about it's functioning and uses and also about its Tools. The 2nd session was lead by Pranaya Reddy who gave us a brief description on Web Analysis. The next phase of the session was held by the CEO Sravan Kumar who gave us an outline about his career and his accomplishments and the opened a chit-chat session where we put forward our queries. We then had the luck of a bonus session in which a client from New Zealand and a very close friend of the CEO shared his experiences and also answered our questions. This visit was successfully completed under the guidance and support of HOD Sir, Nominee Faculty.</p>
POs attained with this Event	PO3, PO5, PO8, PO9, PO10, PO11, PO12



GOKARAJU RANGARAJU

INSTITUTE OF ENGINEERING AND TECHNOLOGY

Photographs of the event





GOKARAJU RANGARAJU

INSTITUTE OF ENGINEERING AND TECHNOLOGY

S:NO	Roll No	Name
1	19241A1201	RITHIK BARSAL
2	19241A1202	ABHIMAN SATHWIK ERLA
3	19241A1203	AKKENAPALLY SAI HARINI
4	19241A1204	ANAKALA LOKESH REDDY
5	19241A1205	ARURI NAGA SHREYA
6	19241A1206	BALURI RISHIKA REDDY
7	19241A1207	BELLAMKONDA ANUSHA
8	19241A1208	BHAGAVATHULA KRISHNA VAMSI
9	19241A1209	BINGI BHAVANA
10	19241A1210	BORAMCHU SIVA MANGA RAJU
11	19241A1211	BURRI ANVITHA
12	19241A1212	CHERUKURI RAHUL VARMA
13	19241A1213	CHINNAM POOJITHA
14	19241A1214	KALYANI CHITTIPOLU
15	19241A1215	D KRITHIKA REDDY
16	19241A1216	DESHAPAGA DINESH CHAITANYA
17	19241A1217	DEVARAKONDA NAVEEN
18	19241A1218	DOULATHBAJI PREETHI
19	19241A1219	EDLA THARUN
20	19241A1220	G SHIVA KUMAR
21	19241A1221	GADDAM DEEPTHI
22	19241A1222	GAJAWADA RAKSHITHA
23	19241A1223	GOLLAPALLI LIKHITHA
24	19241A1224	JASTHI NEHA
25	19241A1225	ANIKETH JINDAL
26	19241A1226	KOLA VARSHITH
27	19241A1227	KOLEPALLI SUJANA
28	19241A1228	KURIKELLY RISHIK
29	19241A1229	LAKSHMI JASWITHA AITHA
30	19241A1230	MARRIVAGU SRIDHAR REDDY
31	19241A1231	MAVUDURU VENKATA SAI NITIN
32	19241A1232	MD MAROOF
33	19241A1233	MEKALA NITHISH KUMAR
34	19241A1234	MOTHE VENKATA SAI KIRAN
35	19241A1235	MUCHALA SANDEEP REDDY
36	19241A1236	NALADALA HEMANTH KUMAR
37	19241A1237	NENAVATH ANIL NAYAK
38	19241A1238	PARAKALA VENKATA ANIRUDH
39	1924A1239	PEDDAPATLOLLA UKRITHA
40	19241A1240	PODDUTURI HRUTHVIK REDDY
41	19241A1241	PURANAM SRAVANI



GOKARAJU RANGARAJU

INSTITUTE OF ENGINEERING AND TECHNOLOGY

42	19241A1242	PUSUKURI DIVYA SREE
43	19241A1243	R SRI HARSHITHA
44	19241A1244	RAYAPUDI NAVYA SRI
45	19241A1245	S SHOBAN KUMAR
46	19241A1246	SAI MANIKANTA PHANI TEJA UPADHYAYULA
47	19241A1247	SAI MEGHANA GOGINENI
48	19241A1248	SAMUDRALA KARTHIK
49	19241A1249	SANDAGALA ARUN KUMAR
50	19241A1250	SHAIK SAHIL
51	19241A1251	SHAIK SOHEL
52	19241A1252	SHASHANK JAJIMOGGALA
53	19241A1253	SURAM SRINIVAS
54	19241A1254	T SHREYAS SINGH
55	19241A1255	THUNUGUNTLA SRICHAKRANATH
56	19241A1256	VAGALAGANI SRICHARAN
57	19241A1257	VANIMIREDDY RAM TEJA
58	19241A1258	VEMULA SHEETHAL REDDY
59	19241A1259	VODNALA SAITEJA
60	19241A1260	YAMSANI NITISH
61	19241A1261	A NIKHIL
62	19241A1262	ALLURI PRANAYA
63	19241A1263	AMBATIPALLI ANAND SAI
64	19241A1264	AVULA SHIVA
65	19241A1265	B SEERSHIKA
66	19241A1266	BALAMAISI ARAVIND
67	19241A1267	BALIGUDAM HRUTHIKA
68	19241A1268	BALMURI ANIRUDH
69	19241A1269	BANDARI VINAY
70	19241A1270	CHAKKA SHIRISHA
71	19241A1271	CHENNAM SAI MANOJ
72	19241A1272	CHUKKA SACHIN
73	19241A1273	D PAVITRA SAGAR
74	19241A1274	D V SOWMYA
75	19241A1275	DEVARAPALLI SAI REVANTH REDDY
76	19241A1276	DEVIDI RAMAKANTH
77	19241A1277	DUSA NISHITHA
78	19241A1278	G SAI SRI JAHNAVI
79	19241A1279	GOTTUMUKKALA VINAY VARMA
80	19241A1280	JALUKURU VASAVI
81	19241A1281	K AMIT VARMA
82	19241A1282	K JYOTHI
83	19241A1283	KARNAKANTI SHIRISHA



GOKARAJU RANGARAJU

INSTITUTE OF ENGINEERING AND TECHNOLOGY


84	19241A1284	KARUPOTULA NIPUNIKA
85	19241A1285	KATUKURI APARNA
86	19241A1286	KOBANNAGARI UDAY
87	19241A1287	KORAM NAVYA SREE
88	19241A1288	KOTAMRAJU SRI HARSHA
89	19241A1289	KRISHNA PRASADA REDDY ALURU
90	19241A1294	MEGAVATH SANDEEP
91	19241A1295	MOHAMMED FASIUDDIN
92	19241A1296	MUPPALA ANANTHA VARMA
93	19241A1297	N DHEERAJ KRISHNA
94	19241A1298	N HARSHA VARDHAN KRISHNA
95	19241A1299	NAREDLA TRISHA REDDY
96	19241A12A0	NUTALAKANTI NIVEDITHA
97	19241A12A1	PENMETSA NIKHIL VARMA
98	19241A12A2	PERAM VISHAL
99	19241A12A3	PRANITHA GAYATRI T
100	19241A12A4	PUTTI GRACE
101	19241A12A5	RIDHI VYAS
102	19241A12A6	S NAVEENA
103	19241A12A7	S SOURAV CHOUDHARY
104	19241A12A8	SAMPATH REDDY VANGETI
105	19241A12A9	SARVIGARI SANKEERTH REDDY
106	19241A12B0	SHAIK ATHIYA
107	19241A12B1	SOPPADANDI SIDDDHARTH
108	19241A12B2	SURAM KARTHIK
109	19241A12B3	THODUPUNURI SREEKAR
110	19241A12B4	TULLURI SAI RAJEEV
111	19241A12B5	U DINESH
112	19241A12B6	VASIKARLA GAYATHRI SHRIYA
113	19241A12B7	VINEESHA MANDAPATI
114	19241A12B8	VITTEDE ARUN
115	19241A12B9	YALLA MITHRA VARDHAN RAO
116	19241A12C0	YASHWANTH REDDY GADDAM
117	19241A12C1	ANIRUDH SURABI
118	19241A12C8	BHASKARLA SAI SOWGANDHIKA
119	19241A12C9	BOYANAPALLY SAI BHARGAV
120	19241A12D0	BUSSA SAI SWESHIKA
121	19241A12D1	CHANDAMOLLU SUMANTH REDDY
122	19241A12D2	CH YASHWANTH REDDY
123	19241A12D3	CHENNAMANENI SAKETH RAO
124	19241A12D4	CHERUKURI DIVIJA
125	19241A12D5	CHILUKALA JANAKIDEVI
126	19241A12D6	DEVANGAM KOTHA SAKETH




GOKARAJURANGARAJU

INSTITUTE OF ENGINEERING AND TECHNOLOGY

127	19241A12D7	DHEERAJ MENON
128	19241A12D8	DONTHA LAXMI NANDHAN
129	19241A12D9	GADDAMANUGU SAI NARAYANA
130	19241A12E0	GOGIKAR SHIVA SHANKAR
131	19241A12E1	GOLLA DIVYASRI
132	19241A12E2	GURUVANNAGARI VISHNU VARDHAN RAO
133	19241A12E3	JAGGAREDDY RUTVIK REDDY
134	19241A12E4	JULAKANTI SAI KETAN REDDY
135	19241A12E5	KAITHALA MANOJ
136	19241A12E6	KAMANI RAGHAVENDRA RAO
137	19241A12E7	KEMMASARAM VARSHITH
138	19241A12E8	KESHAVAGARI NIKITHA
139	19241A12E9	KOTHAKAPU SAMPATH REDDY
140	19241A12F0	KOYADI SHIVA PRASAD GOUD
141	19241A12F1	KOYYA THANUJA
142	19241A12F2	KUDIPUDI PHANI SREE
143	19241A12F3	KURVA VAMSHI KRISHNA
144	19241A12F4	LINGALA SATHWIK REDDY
145	19241A12F5	MACHAVARAM CHANDRA REDDY
146	19241A12G3	NACHAM PREETHI
147	19241A12G4	NEERATI MADHAVAN
148	19241A12G5	NERELLA KUMUDINI
149	19241A12G6	P DIVYA
150	19241A12H0	SAPAVATH PAVAN
151	19241A12H1	SASANAPURI SNEHITHA
152	19241A12H2	SHAIK AFZAL ARFAN
153	19241A12H3	SHAIK WAJAHATH
154	19241A12H4	SOPPADANDI ADITHI
155	19241A12H5	TUMMA NANDINI
156	19241A12H6	VAJAJEJULA N V H YALLARI ANAGHA LAXMI
157	19241A12H7	VELUMURI ARAVINDA APARNA
158	19241A12H8	VENKATRAM JAGADEESHWAR REDDY
159	19241A12H9	VYAMASANI SHREYA
160	19241A12I0	YERAVELLI AKSHITHA


Signature of coordinator


Signature Of HOD(BS&H)



Gokaraju Rangaraju Institute of Engineering and Technology
Department of S&H
EVENT SUMMARY REPORT

GRIET/ADSAO/13G/19-20

Nature of the Event (Workshop / FDP / Seminar / Guest Lecture / Talk GD/ Training Program / Quiz / Presentation)	Field Trip - Mechanical Engineering Btech Iys
Title / Theme of the Event	Visit to Telangana Hub, IIIT-Hyderabad Campus, Gachibowli, Hyderabad, Telangana
Details of the Coordinator	Dr. K. Vagdevi Assoc. Prof, Department of H&S, GRIET
Date on which Event is held	17 October 2019
Details of the Speaker / Guest Name & Organization	GRIET Faculty
Target Audience (Teaching Faculty / Non-Teaching Faculty / Students)	Students & Teaching Faculty

**Summary of
the Event**

T-Hub is a unique public/private partnership between the government of Telangana, 3 of India's premier academic institutes (IIIT-H, ISB & NALSAR) and key private sector leaders. It stands at the intersection of the start-up, academic, corporate, research and government sectors. Attract the best start-ups and entrepreneur organizations from across the world to Hyderabad. Equip innovators and organizations alike with the entrepreneurship skills required to succeed, using methodologies that transcend traditional learning. Educate & promote all entrepreneurship related stakeholders in Hyderabad, including start-ups.

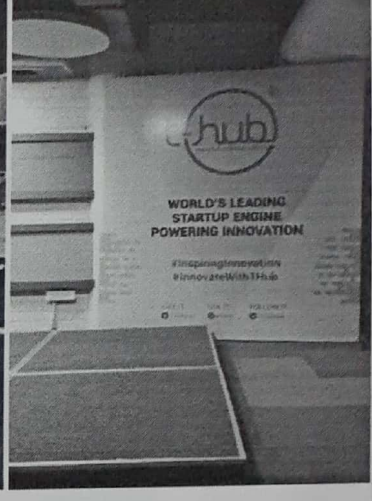
Field Trip is considered as one of the tactical methods of teaching. The main reason behind this- it lets student to know things practically through interaction, working methods and employment practices. Moreover, it gives exposure from academic point of view. Main aim of Field Trip is to provide an exposure to students about practical working environment. They also provide students a good opportunity to gain full awareness about industrial practices. Through Field Trip students get awareness about new technologies. Technology development is a main factor, about which a students should have a good knowledge. Visiting different companies actually help students to build a good relationship with those companies. We know building relationship with companies always will always help to gain a good job in future. After visiting an industry students can gain a combined knowledge about both theory and practical, as part of the internship Students of It have Visited T-hub.

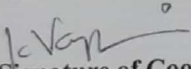
About the Company:

T-Hub is a unique public/private partnership between the government of Telangana, 3 of India's premier academic institutes (IIIT-H, ISB & NALSAR) and key private sector leaders. It stands at the intersection of the start-up, academic, corporate, research and government sectors. Attract the best start-ups and entrepreneur organizations from across the world to Hyderabad. Equip innovators and organizations alike with the entrepreneurship skills required to succeed, using methodologies that transcend traditional learning. Educate & promote all entrepreneurship related stakeholders in Hyderabad, including start-ups.

T-Hub leads India's pioneering innovation ecosystem that powers next-generation products and new business models. Incorporated in 2015, it has provided over 1100+ national and international startups with access to better technology, talent, mentors, customers, corporates, investors and government agencies.

The Government of Telangana has taken the path of "Innovation and Entrepreneurship" to make Telangana the most preferred investment destination in India. As a part of this effort the Government is collaborating with industry and premier educational institutes to set up T-Hub




Signature of Coordinator

Signature of HOD

**POs
attained
with this
Event**
(number and
description)

- 6. Understanding professional and ethical responsibility.
- 7. Ability to communicate effectively.
- 10. Knowledge of contemporary issues.

**Photographs
of the event**
(Hard copy and
Soft copy)





Gokaraju Rangaraju Institute of Engineering & Technology

List of students participated in the field trip

Branch:ME

A.Y:2019-2020

S.No	Roll No	Name of the student	Signature of the student
1	19241A0301	ABDUL KAREEM	Abdul.
2	19241A0302	ABHINAV REDDY METTU	Abhis.
3	19241A0303	ADABALA NEHA SANJANA	Sanjana.
4	19241A0304	ADEPU MANIKANTA	Manika.
5	19241A0305	ALIGI PAULSON	Paulson.
6	19241A0306	ALLAMPALLY SAI SRUJAN	Srujan.
7	19241A0307	ALURU ABHILASH	Abhilash.
8	19241A0308	BANDARI VARUN RAJ	Varun.
9	19241A0309	BODAKUNTI NITHISH	Nithish.
10	19241A0310	BYRAPOGU MANISHA	Manisha.
11	19241A0311	CHALAK VINIT KUMAR	Vinit.
12	19241A0312	CHAPPIDI PRAVALLIKA	Pravalika.
13	19241A0313	CHEEMALAMUDI DASHARATH	Dasharath.
14	19241A0314	CHINNAM LAXMAN	Laxman.
15	19241A0315	CHINTALWAR SRIPADH	Sripadh.
16	19241A0316	DONTHA RAHUL	Rahul.
17	19241A0317	DURGA ADITHYA	Adithya.
18	19241A0318	ELOORE VARUN	Varun.
19	19241A0319	G JOY JOSEPH EMMANUEL	Emmanuel.
20	19241A0320	GADE NITIN	Nitin.
21	19241A0321	GONNURU NITISH REDDY	Nitish.
22	19241A0322	JAMMULA VENKATA SURESH	Suresh.
23	19241A0323	KANDUKURI ISHITHA	Ishitha.
24	19241A0324	KANDULA AMBIKA	Ambika.
25	19241A0325	KATTA SHARATH CHANDRA	Sharath.
26	19241A0326	KOLLAN MANIVARDHAN REDDY	Manivardhan.
27	19241A0327	MALOTH PAVITHTA	Pavithra.
28	19241A0328	MEDIKONDURI ANIRUDH	Anirudh.
29	19241A0329	M.BALA GOPALA KRISHNA REDDY	Gopala.
30	19241A0330	LALITH CHANDRA SRIKAR	Srikar.
31	19241A0331	NARAYANDAS THARUN KUMAR	Tharun.
32	19241A0332	N V S MUKUND	Mukund.
33	19241A0333	NAGAPURI PRADEEP	Pradeep.
34	19241A0334	NISHANTH VARMA PENMETS	Penmets.
35	19241A0335	NUPUR M PHADKE	Phadke.
36	19241A0336	ORUGALA SHASHI VARDHAN	Shashi.
37	19241A0337	P VENKAT REDDY	Venkat.
38	19241A0338	PERAM VENKATAJITHENDRA REDDY	Jithendra.
39	19241A0339	PETTA GANESH SESHASAI KRISHNA PAVAN	Pavan.
40	19241A0340	PILLUTLA RAJESH KARTHIK	Karthik.
41	19241A0341	PULIKANDALA SHERWIN PAUL	Sherwin.
42	19241A0342	PURIMITLA ASHISH	Ashish.
43	19241A0343	RAUTWAR SHASHWATH	Shashwath.
44	19241A0344	EERABATTINI ROHIT	Rohit.
45	19241A0345	RYALI NAGALAKSHMI	Nagalakshmi.
46	19241A0346	SAHIL SHARIF	Sahil.

47	19241A0347	SHEELAM BALAVARDHAN REDDY	Palanush Reddy
48	19241A0348	SINGAM KUMARASWAMY	Singer
49	19241A0349	SONTI MURALIDHAR	Sonhi
50	19241A0350	SUDEEP SATYA SAI CHITTAJALLU	Chitajallu
51	19241A0351	SUHAS PEDDI	Buhas
52	19241A0352	SURATHU SRI VENKATA SURYA TEJA	Suri
53	19241A0353	SYED NAWAZ	Syed Nawaz
54	19241A0354	T.LEELA SREE VATAN	Vatan
55	19241A0355	TALLURI SHARON	Sharon
56	19241A0356	TALUKA USHASRI	Ushari
57	19241A0357	TATI VENEELA	Tati Venela
58	19241A0358	vadicherla akash	akash
59	19241A0359	VENKATAPURAM SNEHITH KUMAR	Kumar
60	19241A0360	yeruva srujan kumar reddy	Kumbharay
61	19241A0361	ALLURI NAMITHA REDDY	Namitha Reddy
62	19241A0362	AMARAGONDA SRINIVAS	
63	19241A0363	ARUKONDA SOUMYA	Soumya
64	19241A0364	B VAISHNAVI	
65	19241A0365	BASUDE AMULYA	Amulya
66	19241A0366	BHANURU YASHWANTH REDDY	
67	19241A0367	BOLLAM VIVEK	Vivek
68	19241A0368	DANDAMUDI ASHISH	Ashish
69	19241A0369	DASARI SREENILAY YADAV	Sreenilay
70	19241A0370	G P VAISSHNAVI	Vaishnavi
71	19241A0371	G THIRUMALESH	Thirumalesh
72	19241A0372	GANNU RUSHIKESH REDDY	Rushikesh Reddy
73	19241A0373	GNANENDAR CHAWAN	Chawan
74	19241A0374	KATHERA SAI NIKHIL	Nikhil
75	19241A0375	KEMOJI MEGHANSH CHARY	Chary
76	19241A0376	KOLTHURU POOJASHWINI	Poojashwini
77	19241A0377	MANDALA SAKETH	Saketh
78	19241A0378	MANKENA HARSHITH	Harshith
79	19241A0379	MD SHAFI	Shafi
80	19241A0380	MUDIMELA GOWRAV REDDY	Gowrav Reddy
81	19241A0381	MYNEDI SIDDHARTHA	Siddhartha
82	19241A0382	PATLOLLA AISHWARYA	Aishwarya
83	19241A0383	PELLETI SAI RAKESH REDDY	
84	19241A0384	PERUMALLA DIVYA SRI	Divya Sri
85	19241A0385	RUCHIR NANDAN	Nandan
86	19241A0386	SHAIK FARDEEN MALIK	Fardeen
87	19241A0387	SUSVITHA BANOTH	Banoth
88	19241A0388	SYED MOHAMMED PASHA	Pasha
89	19241A0389	TALARI PRASANTHI	Prasanthi
90	19241A0390	THIGULLA HARSHA VARDHAN	Harsha Vardhan
91	19241A0391	TOMPALA VAMSHI	Vamshi
92	19241A0392	VARIKUPPALA PRANAY KUMAR	Pranay Kumar
93	19241A0393	Y TEJA NAGA SAI RUPESH	Rupesh

Signature of the Co-ordinator

Signature of HOD